

2 BEDROOMS | 2 BATHROOMS | 2 CAR GARAGE



# THE CAPRI III

## *Luxury Patio Home*



This brochure is for illustrative purposes only and not part of a legal contract. The right is reserved to make changes, without notice or obligation. Features and specifications may vary depending on the options and elevations selected. Please consult your New Home Consultant for complete information.

We are pledged to the letter and spirit of U.S. policy for the achievement of equal housing opportunity throughout the nation. We encourage and support an affirmative advertising and marketing program in which there are no barriers to obtaining housing because of race, color, religion, sex, handicap, familial status or national origin.



**SCARMAZZI  
HOMES**  
*Luxury Patio Homes*

# THE CAPRI III

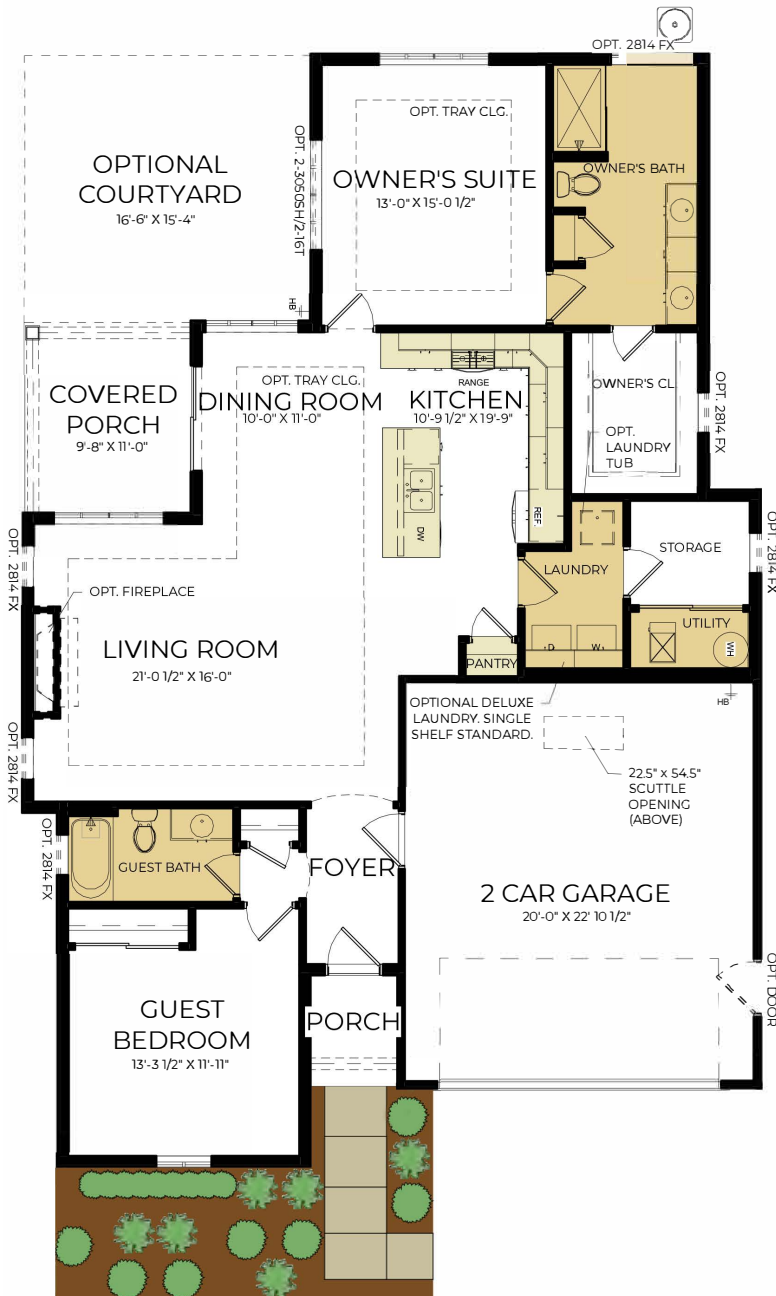
Approximate Sq. Footage:

1st Floor: 1,543 Sq. Ft.

Extended Living Room: 107 Sq. Ft.

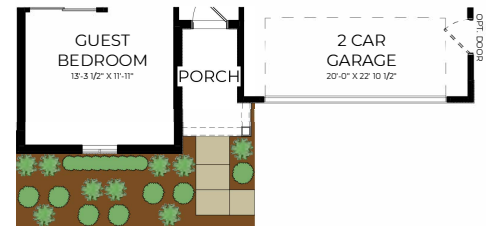
Total: 1,543 - 1,650 Sq. Ft.

## SINGLE-LEVEL FLOORPLAN



ELEVATIONS 1 & 2- FRONT ELEVATION

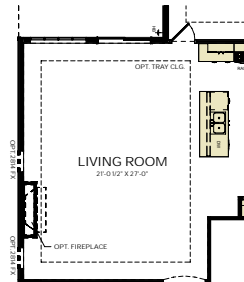
## OPTIONS



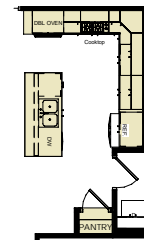
ELEVATION 3 - FRONT ELEVATION



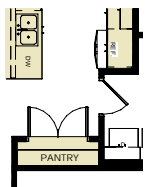
ELEVATION 4 - FRONT ELEVATION



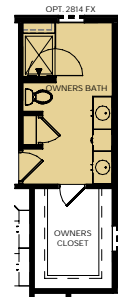
EXTENDED LIVING ROOM



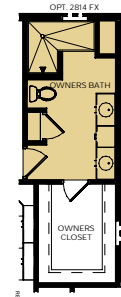
KITCHEN UPGRADE 2



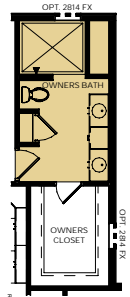
FULL KITCHEN PANTRY IN LIEU OF OPTIONAL DESK



OWNER'S DELUXE SHOWER WITH FRAMELESS GLASS DOOR



OWNER'S WALK-IN ROMAN SHOWER



OWNER'S ZERO THRESHOLD SHOWER

\*Additional options may be available.

(724) 223-1844

WWW.SCARMAZZIHOMES.COM

This floorplan brochure is for illustration purposes only. Features and specifications are subject to change without notice. The designs shown here, as well as the entire Development System, are the property of Epcon Communities Franchising, Inc. and are subject to copyright, patent, and trade secret protection. Use of any part of these designs or the Development System is prohibited without the written consent of Epcon Communities Franchising, Inc.

**SCARMAZZI  
HOMES**  
Luxury Patio Homes