

2+ BEDROOMS | 2+ BATHROOMS | 2.5 CAR GARAGE



ELEVATION A - COLONIAL

\*Elevation shown with optional garage door windows.

# THE PROMENADE

Luxury Patio Home



ELEVATION A - EUROPEAN COUNTRY



ELEVATION A FOUR SEASONS ROOM - EUROPEAN COUNTRY



ELEVATION A - EUROPEAN COUNTRY  
BONUS SUITE



ELEVATION B - EUROPEAN COUNTRY  
BONUS SUITE

This brochure is for illustrative purposes only and not part of a legal contract. The right is reserved to make changes without notice or obligation. Features and specifications may vary depending on the options and elevations selected. Please consult your New Home Consultant for complete information.

We are pledged to the letter and spirit of U.S. policy for the achievement of equal housing opportunity throughout the nation. We encourage and support an affirmative advertising and marketing program in which there are no barriers to obtaining housing because of race, color, religion, sex, handicap, familial status or national origin.



# SCARMAZZI HOMES

Luxury Patio Homes

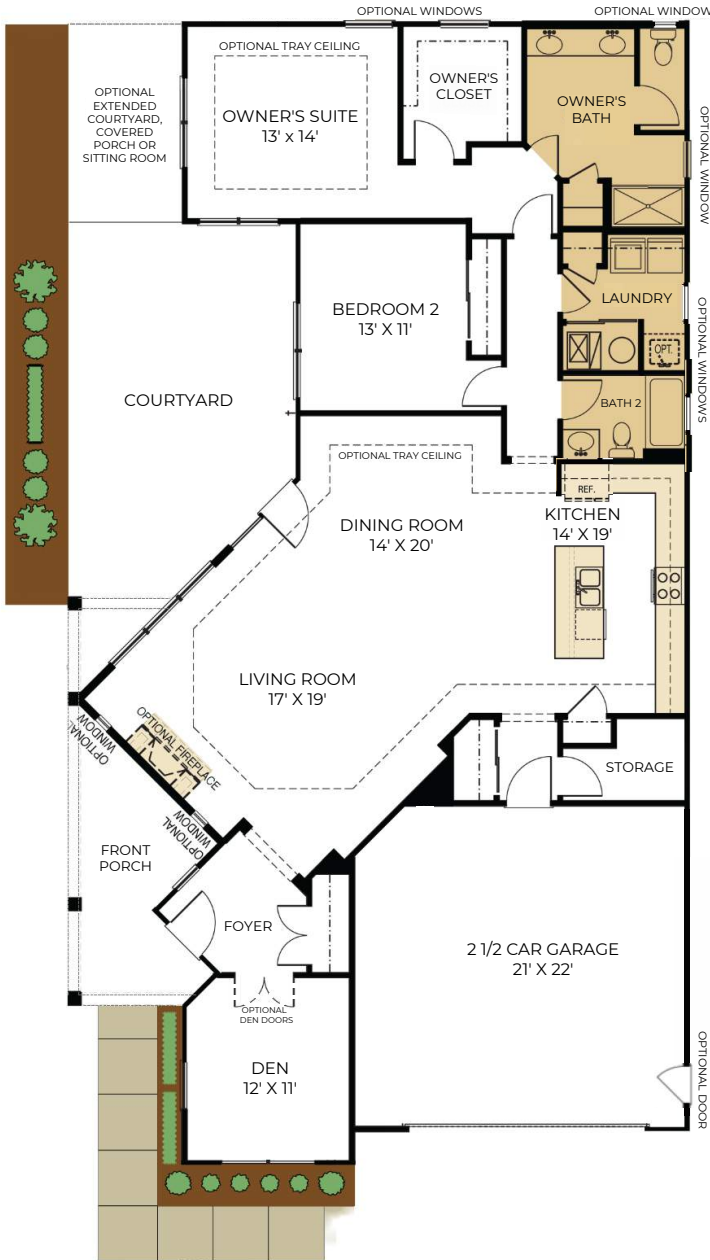
# THE PROMENADE

Approximate Sq. Footage:

1st Floor: 1,995 Sq. Ft.  
Sitting Room: 209 Sq. Ft.  
2nd Floor: 818 - 858 Sq. Ft.

Total: 1,995 - 3,062 Sq. Ft.

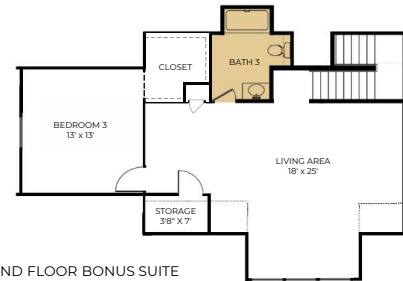
## SINGLE-LEVEL FLOORPLAN



## OPTIONS



SECOND FLOOR BONUS SUITE ELEVATION A 818 SQ. FT.



SECOND FLOOR BONUS SUITE ELEVATION B 858 SQ. FT.

(724) 223-1844

WWW.SCARMAZZIHOMES.COM

This floorplan brochure is for illustration purposes only. Features and specifications are subject to change without notice. The designs shown here, as well as the entire Development System, are the property of Epcon Communities Franchising, Inc. and are subject to copyright, patent, and trade secret protection. Use of any part of these designs or the Development System is prohibited without the written consent of Epcon Communities Franchising, Inc.

**SCARMAZZI  
HOMES**  
Luxury Patio Homes