

2+ BEDROOMS | 2+ BATHROOMS | 2 CAR GARAGE



ELEVATION 4
INCLUDES BONUS SUITE

*Elevations 2, 3 & 4 shown with optional garage door windows.

THE PROMENADE

Luxury Patio Home



ELEVATION 1



ELEVATION 2



ELEVATION 3

This brochure is for illustrative purposes only and not part of a legal contract. The right is reserved to make changes without notice or obligation. Features and specifications may vary depending on the options and elevations selected. Please consult your New Home Consultant for complete information.

We are pledged to the letter and spirit of U.S. policy for the achievement of equal housing opportunity throughout the nation. We encourage and support an affirmative advertising and marketing program in which there are no barriers to obtaining housing because of race, color, religion, sex, handicap, familial status or national origin.



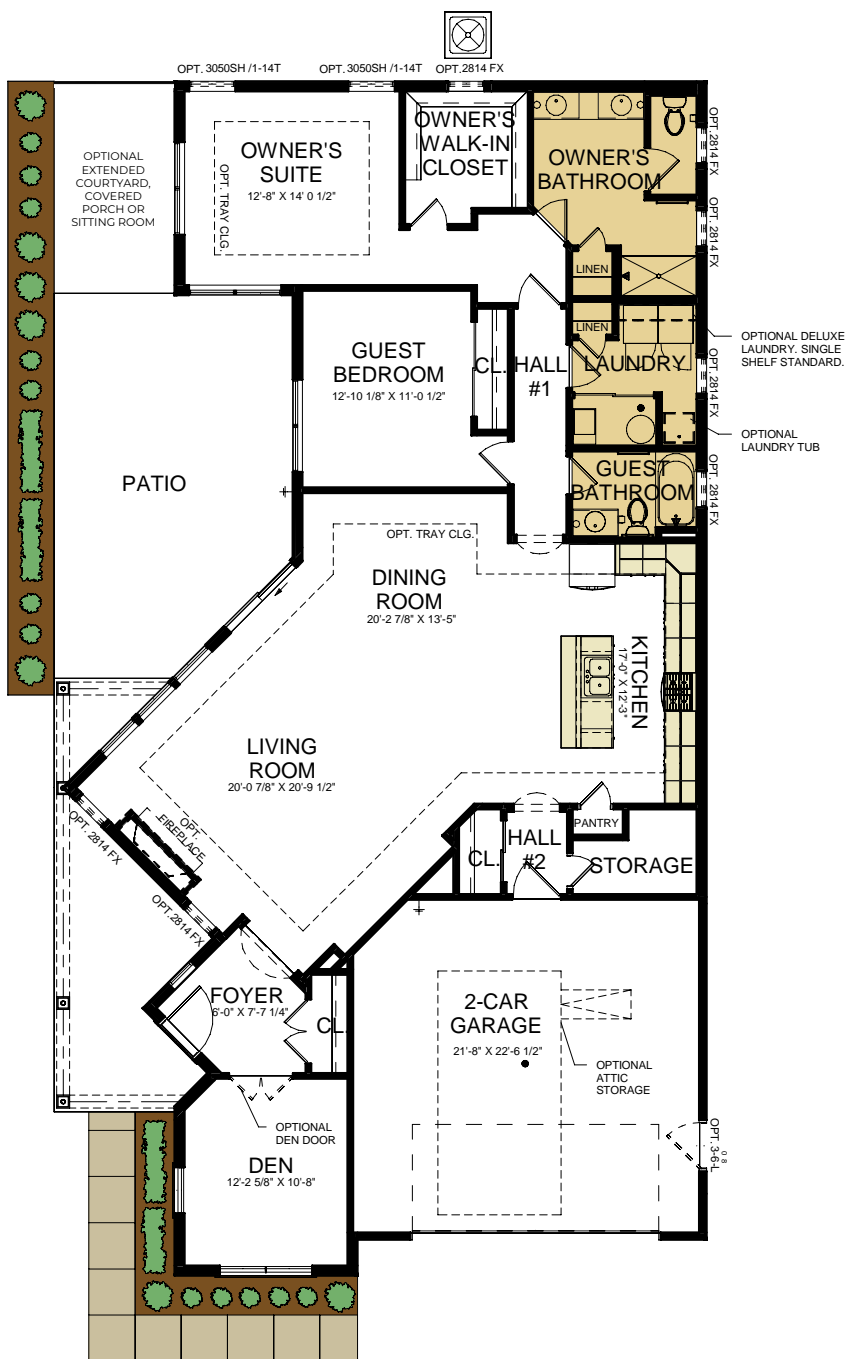
**SCARMAZZI
HOMES**
Luxury Patio Homes

THE PROMENADE

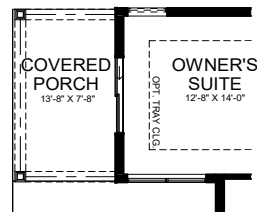
Approximate Sq. Footage:

1st Floor: 1,990 Sq. Ft.
2nd Floor: 867 Sq. Ft.
Sitting Room: 108 Sq. Ft.
Finished Basement: 874 Sq. Ft.
Total: 1,990 - 3,839 Sq. Ft.

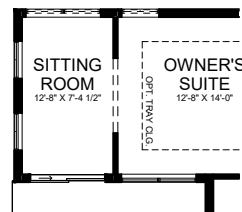
SINGLE-LEVEL FLOORPLAN



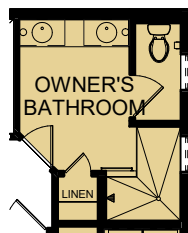
OPTIONS



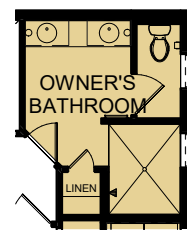
COVERED PORCH



SITTING ROOM



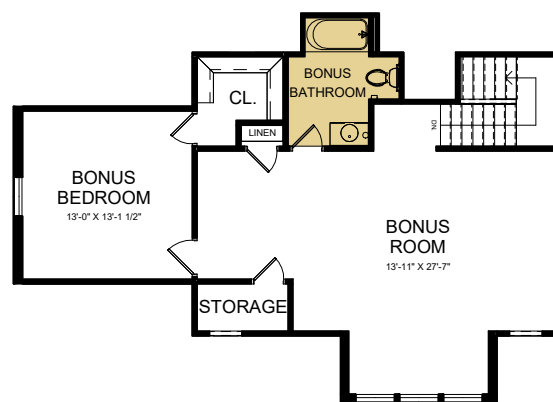
ROMAN OWNER'S
WALK-IN SHOWER



ZERO THRESHOLD
OWNER'S WALK-IN
SHOWER



BONUS SUITE
1ST FLOOR
STAIRWELL
LOCATION



SECOND FLOOR BONUS SUITE

(724) 223-1844

WWW.SCARMAZZIHOMES.COM

This floorplan brochure is for illustration purposes only. Features and specifications are subject to change without notice. The designs shown here, as well as the entire Development System, are the property of Epcon Communities Franchising, Inc. and are subject to copyright, patent, and trade secret protection. Use of any part of these designs or the Development System is prohibited without the written consent of Epcon Communities Franchising, Inc.

**SCARMAZZI
HOMES**
Luxury Patio Homes