

2+ BEDROOMS | 2+ BATHROOMS | 2.5 CAR GARAGE



ELEVATION 4

*Elevations 2,3 & 4 shown with optional garage door windows.

THE TORINO

Luxury Patio Home



ELEVATION 1



ELEVATION 2



ELEVATION 3

This brochure is for illustrative purposes only and not part of a legal contract. The right is reserved to make changes, without notice or obligation. Features and specifications may vary depending on the options and elevations selected. Please consult your New Home Consultant for complete information.

We are pledged to the letter and spirit of U.S. policy for the achievement of equal housing opportunity throughout the nation. We encourage and support an affirmative advertising and marketing program in which there are no barriers to obtaining housing because of race, color, religion, sex, handicap, familial status or national origin.

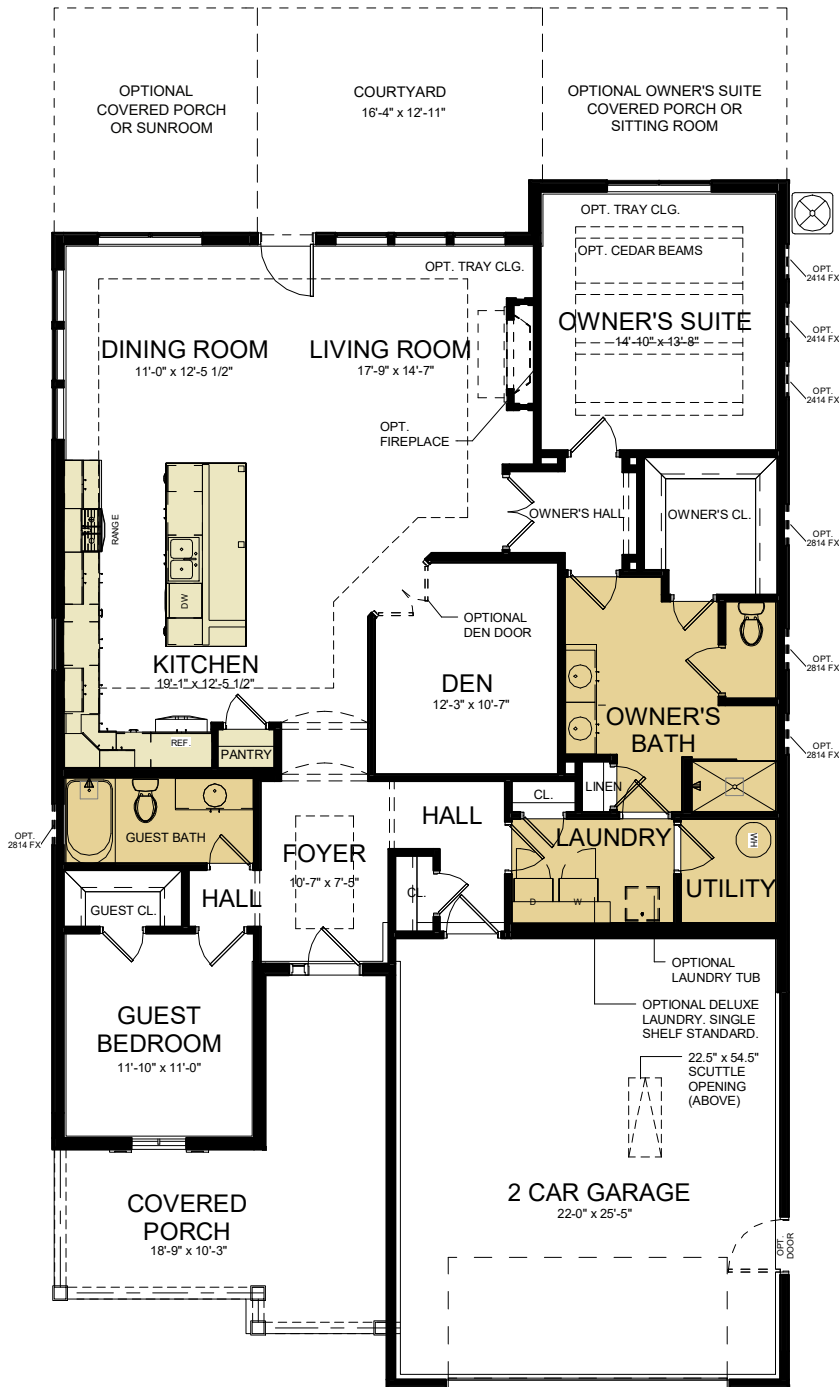


**SCARMAZZI
HOMES**
Luxury Patio Homes

Approximate Sq. Footage:

1st Floor: 1,888 Sq. Ft.
2nd Floor: 675 Sq. Ft.
Sitting Room: 154 Sq. Ft.
Finished Basement: 1,171 Sq. Ft.
Total: 1,888 - 3,888 Sq. Ft.

FIRST FLOOR OPTIONS



OPT. 2B14 FX OPT. 2B14 FX

OWNER'S BATH

SHOWER

OPTIONAL
ZERO THRESHOLD SHOWER

OWNER'S BATH

OPTIONAL ROMAN SHOWER

COVERED PORCH
9'-11" x 14'-0"

OWNER'S SUITE
14'-0" x 14'-0"

OPTIONAL
OWNER'S SUITE
COVERED PORCH

SITTING ROOM
9'-0" x 13'-0"

OWNER'S SUITE
14'-0" x 13'-0"

**OPTIONAL
OWNER'S SUITE
SITTING ROOM**

COVERED PORCH
13'-0" x 10'-10"

DINING ROOM
11'-0" x 12'-5 1/2"

OPTIONAL COVERED PORCH

*Additional options may be available.

(724) 223-1844
WWW.SCARMAZZIHOMES.COM

This floorplan brochure is for illustration purposes only. Features and specifications are subject to change without notice. The designs shown here, as well as the entire Development System, are the property of Epcon Communities Franchising, Inc. and are subject to copyright, patent, and trade secret protection. Use of any part of these designs or the Development System is prohibited without the written consent of Epcon Communities Franchising, Inc.

**SCARMAZZI
HOMES**
Luxury Patio Homes

THE TORINO

Approximate Sq. Footage:

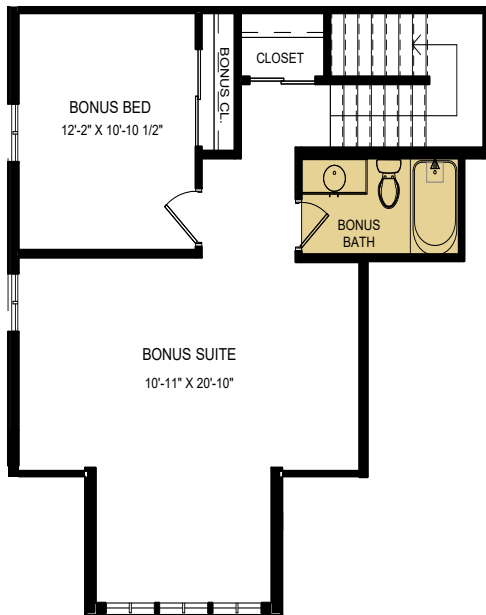
1st Floor: 1,888 Sq. Ft.

2nd Floor: 675 Sq. Ft.

Sitting Room: 154 Sq. Ft.

Finished Basement: 1,171 Sq. Ft.

Total: 1,888 - 3,888 Sq. Ft.



OPTIONAL BONUS SUITE



FIRST FLOOR PLAN
WITH OPTIONAL BONUS SUITE

*Additional options may be available.

THE TORINO

Approximate Sq. Footage:

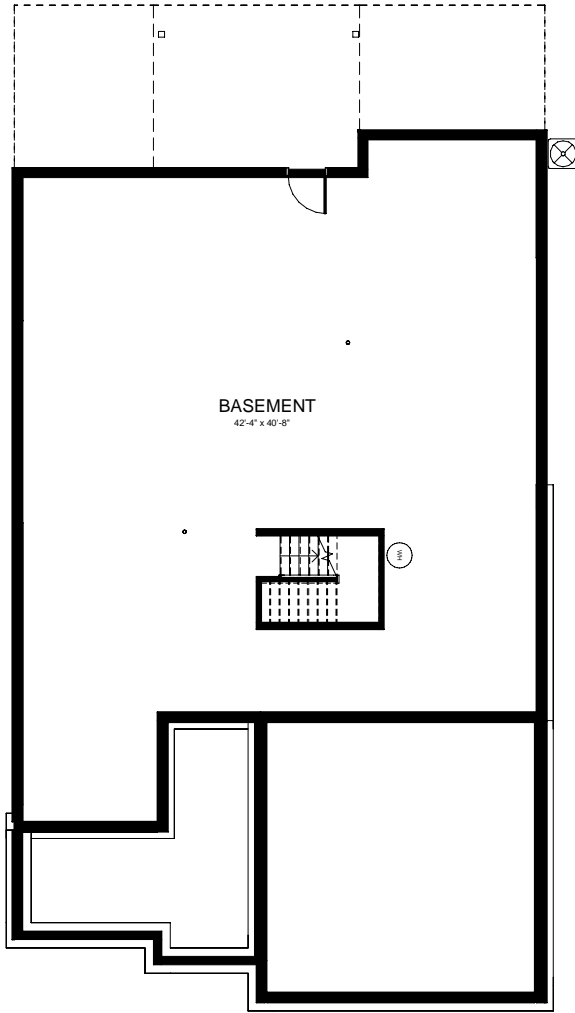
1st Floor: 1,888 Sq. Ft.

2nd Floor: 675 Sq. Ft.

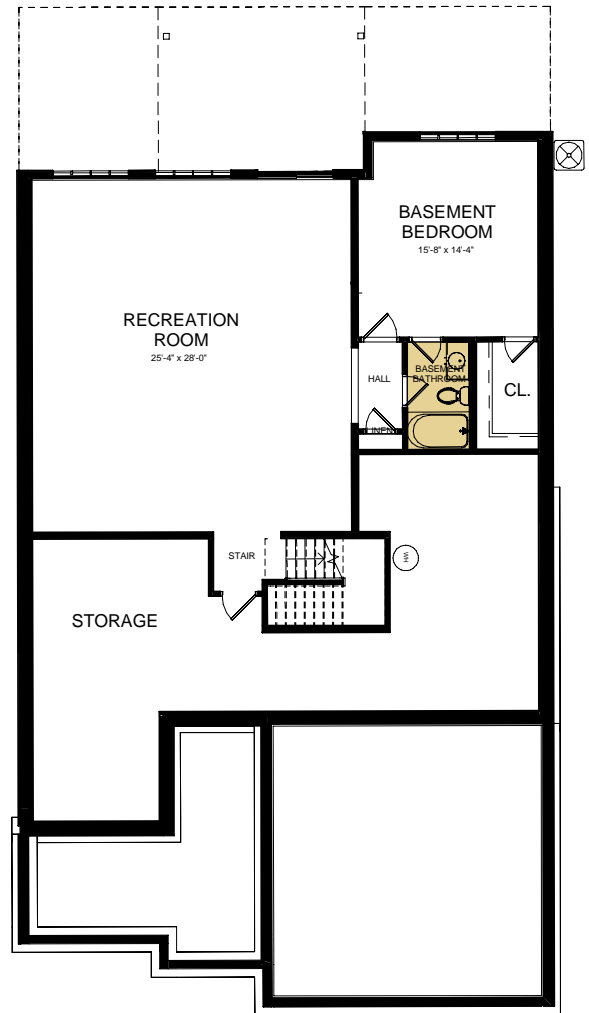
Sitting Room: 154 Sq. Ft.

Finished Basement: 1,171 Sq. Ft.

Total: 1,888 - 3,888 Sq. Ft.



OPTIONAL UNFINISHED
BASEMENT



OPTIONAL FINISHED
BASEMENT

*Optional rough-in bathroom plumbing.

**Optional finished recreational room includes extended unfinished storage in lieu of finished bedroom and bathroom.

***Optional finished bathroom includes linen closet.

****Optional finished bedroom includes walk-in closet.

(724) 223-1844

WWW.SCARMAZZIHOMES.COM

This floorplan brochure is for illustration purposes only. Features and specifications are subject to change without notice. The designs shown here, as well as the entire Development System, are the property of Epcon Communities Franchising, Inc. and are subject to copyright, patent, and trade secret protection. Use of any part of these designs or the Development System is prohibited without the written consent of Epcon Communities Franchising, Inc.

**SCARMAZZI
HOMES**
Luxury Patio Homes