

2+ BEDROOMS | 2+ BATHROOMS | 2.5 CAR GARAGE



ELEVATION 4  
INCLUDES BONUS SUITE

\*Elevations 2,3&4 shown with optional garage door windows.

# THE TORINO

*Luxury Patio Home*



ELEVATION 1



ELEVATION 2



ELEVATION 3

This brochure is for illustrative purposes only and not part of a legal contract. The right is reserved to make changes, without notice or obligation. Features and specifications may vary depending on the options and elevations selected. Please consult your New Home Consultant for complete information.

We are pledged to the letter and spirit of U.S. policy for the achievement of equal housing opportunity throughout the nation. We encourage and support an affirmative advertising and marketing program in which there are no barriers to obtaining housing because of race, color, religion, sex, handicap, familial status or national origin.



**SCARMAZZI  
HOMES**  
*Luxury Patio Homes*

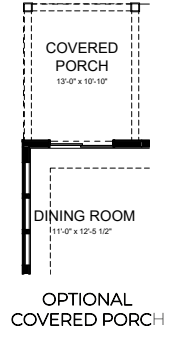
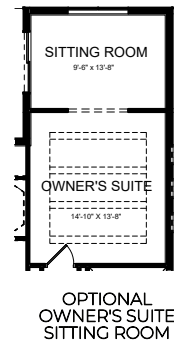
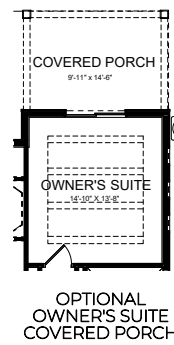
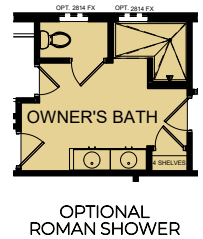
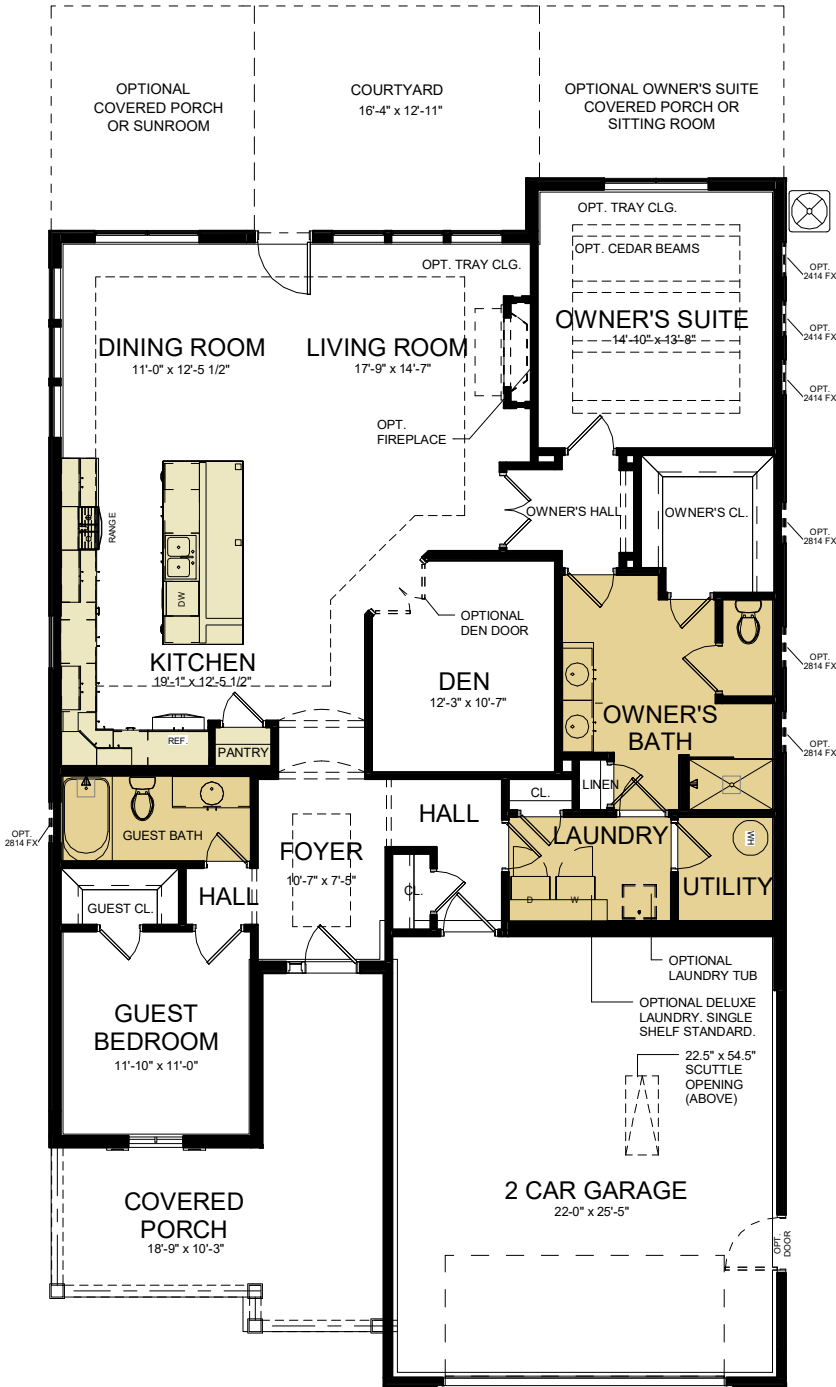
# THE TORINO

Approximate Sq. Footage:

1st Floor: 1,888 Sq. Ft.  
 2nd Floor: 675 Sq. Ft.  
 Sitting Room: 154 Sq. Ft.  
 Finished Basement: 1,171 Sq. Ft.  
 Total: 1,888 - 3,888 Sq. Ft.

SINGLE-LEVEL FLOORPLAN

FIRST FLOOR OPTIONS



\*Additional options may be available.

(724) 223-1844  
 WWW.SCARMAZZIHOMES.COM

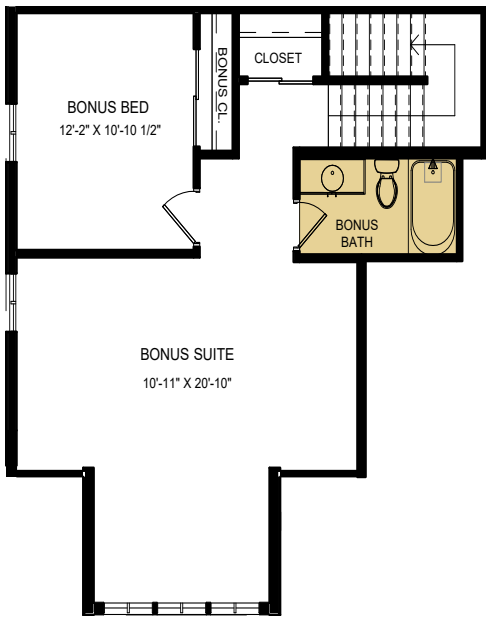
This floorplan brochure is for illustration purposes only. Features and specifications are subject to change without notice. The designs shown here, as well as the entire Development System, are the property of Epcon Communities Franchising, Inc. and are subject to copyright, patent, and trade secret protection. Use of any part of these designs or the Development System is prohibited without the written consent of Epcon Communities Franchising, Inc.

**SCARMAZZI  
 HOMES**  
 Luxury Patio Homes

# THE TORINO

Approximate Sq. Footage:

1st Floor: 1,888 Sq. Ft.  
 2nd Floor: 675 Sq. Ft.  
 Sitting Room: 154 Sq. Ft.  
 Finished Basement: 1,171 Sq. Ft.  
 Total: 1,888 - 3,888 Sq. Ft.



OPTIONAL BONUS SUITE



FIRST FLOOR PLAN WITH OPTIONAL BONUS SUITE

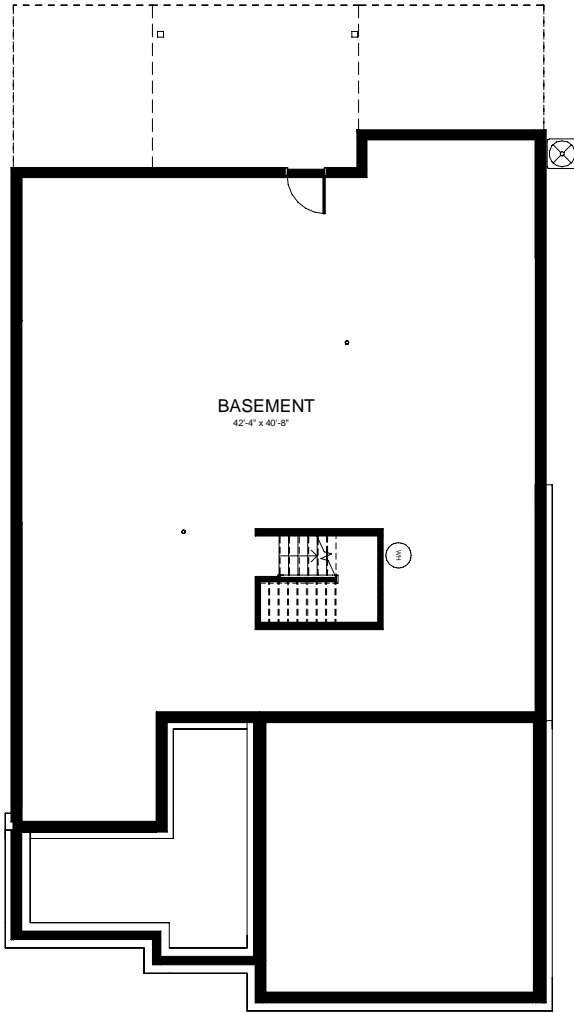
\*Additional options may be available.



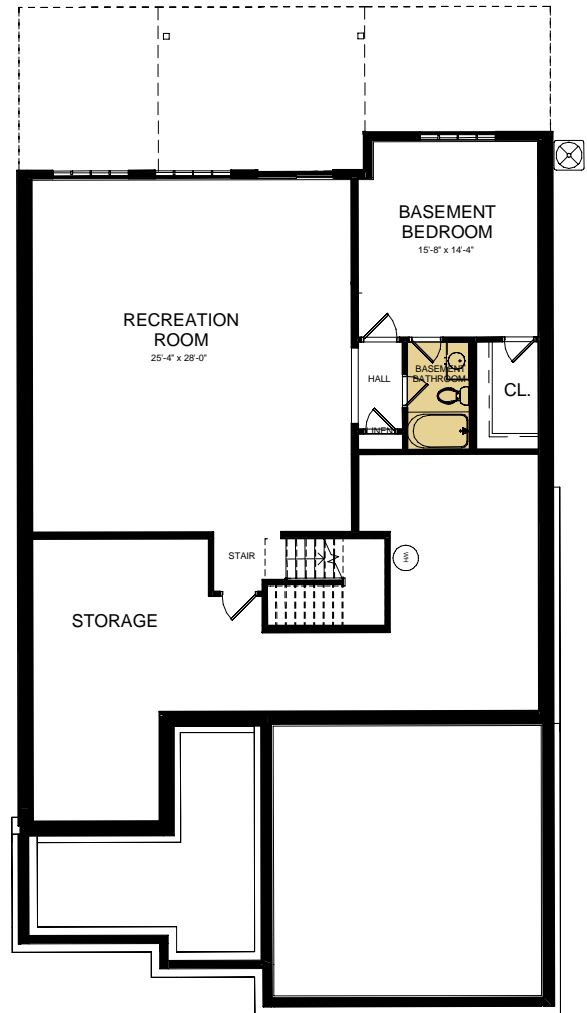
# THE TORINO

Approximate Sq. Footage:

1st Floor: 1,888 Sq. Ft.  
2nd Floor: 675 Sq. Ft.  
Sitting Room: 154 Sq. Ft.  
Finished Basement: 1,171 Sq. Ft.  
Total: 1,888 - 3,888 Sq. Ft.



OPTIONAL UNFINISHED  
BASEMENT



OPTIONAL FINISHED  
BASEMENT

\*Optional rough-in bathroom plumbing.

\*\*Optional finished recreational room includes extended unfinished storage in lieu of finished bedroom and bathroom.

\*\*\*Optional finished bathroom includes linen closet.

\*\*\*\*Optional finished bedroom includes walk-in closet.

(724) 223-1844

WWW.SCARMAZZIHOMES.COM

This floorplan brochure is for illustration purposes only. Features and specifications are subject to change without notice. The designs shown here, as well as the entire Development System, are the property of Epcon Communities Franchising, Inc. and are subject to copyright, patent, and trade secret protection. Use of any part of these designs or the Development System is prohibited without the written consent of Epcon Communities Franchising, Inc.

**SCARMAZZI  
HOMES**  
Luxury Patio Homes