

2+ BEDROOMS | 2+ BATHROOMS | 2 CAR GARAGE



THE SALERNO

Luxury Patio Home



This brochure is for illustrative purposes only and not part of a legal contract. The right is reserved to make changes, without notice or obligation. Features and specifications may vary depending on the options and elevations selected. Please consult your New Home Consultant for complete information.

We are pledged to the letter and spirit of U.S. policy for the achievement of equal housing opportunity throughout the nation. We encourage and support an affirmative advertising and marketing program in which there are no barriers to obtaining housing because of race, color religion, sex, handicap, familial status or national origin.



**SCARMAZZI
HOMES**
Luxury Patio Homes

2+ BEDROOMS | 2+ BATHROOMS | 2 CAR GARAGE

THE SALERNO

Approximate Sq. Footage:

1st Floor: 1,755 Sq. Ft.

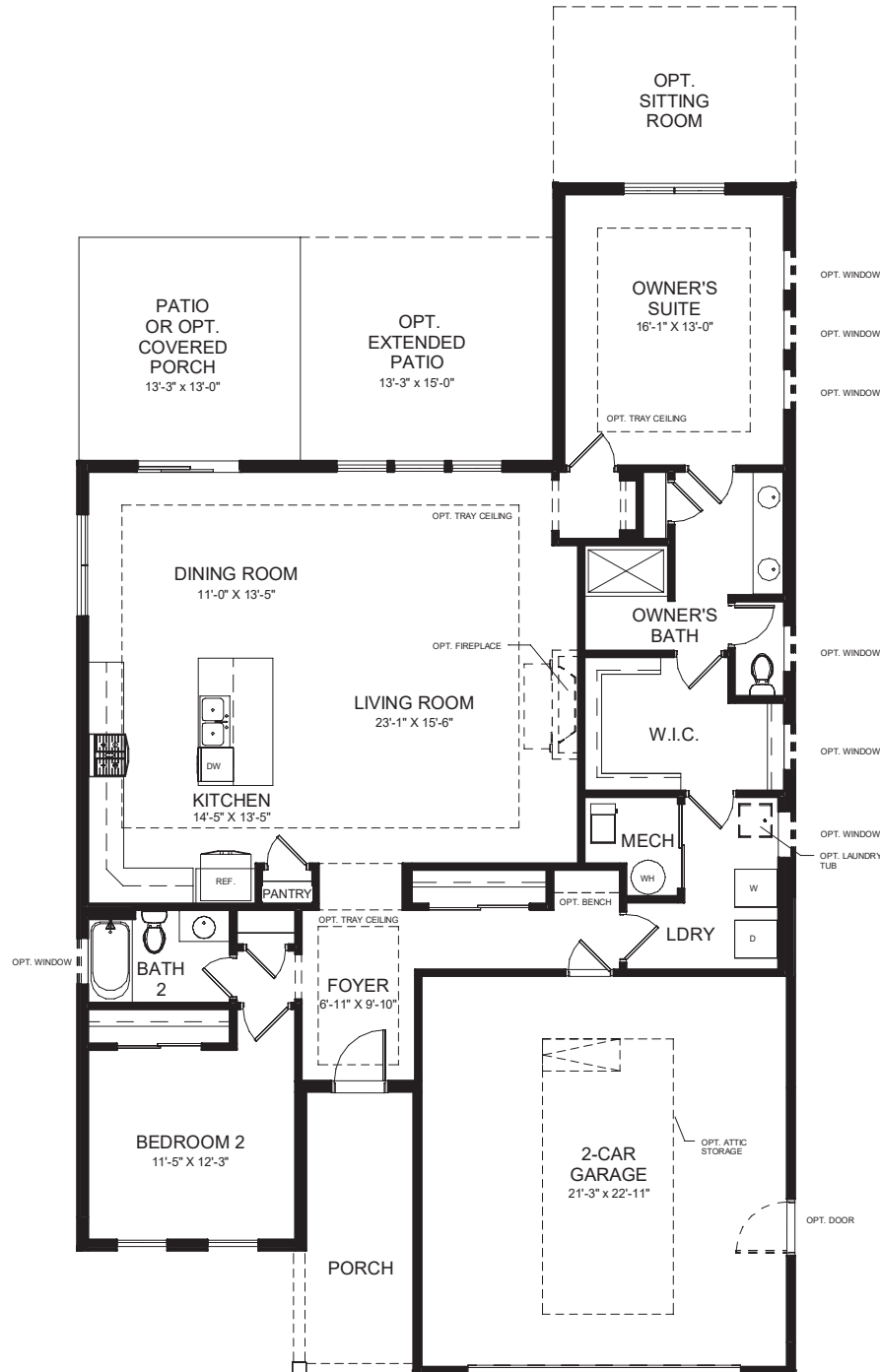
Sitting Room: 136 Sq. Ft.

2nd Floor: 602 Sq. Ft.

Finished Basement: 1,230 Sq. Ft.

Total: 1,755 - 3,257 Sq. Ft.

SINGLE LEVEL FLOOR PLAN



*Additional options may be available.

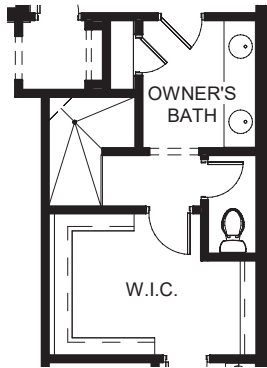
(724) 223-1844
WWW.SCARMAZZIHOMES.COM

This floor plan brochure is for illustration purposes only. Features and specifications are subject to change without notice. The designs shown here, as well as the entire Development System, are the property of Epcon Communities Franchising, Inc. and are subject to copyright, patent, and trade secret protection. Use of any part of these designs or the Development System is prohibited without the written consent of Epcon Communities Franchising, Inc.

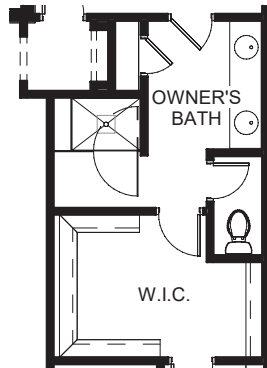
**SCARMAZZI
HOMES**
Luxury Patio Homes

THE SALERNO

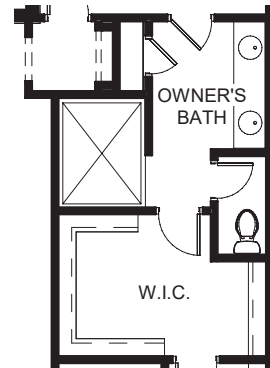
OPTIONS



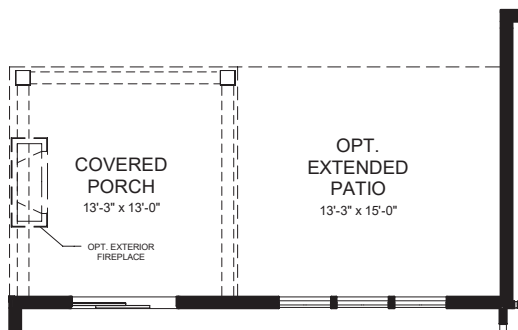
OWNER'S
ROMAN
SHOWER



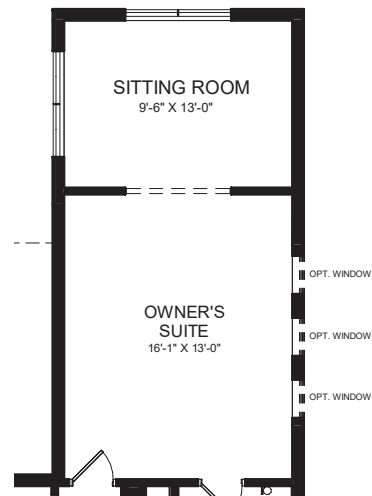
OWNER'S
DELUXE
SHOWER



OWNER'S ZERO
THRESHOLD
SHOWER



COVERED PORCH



SITTING ROOM

*Additional options may be available.

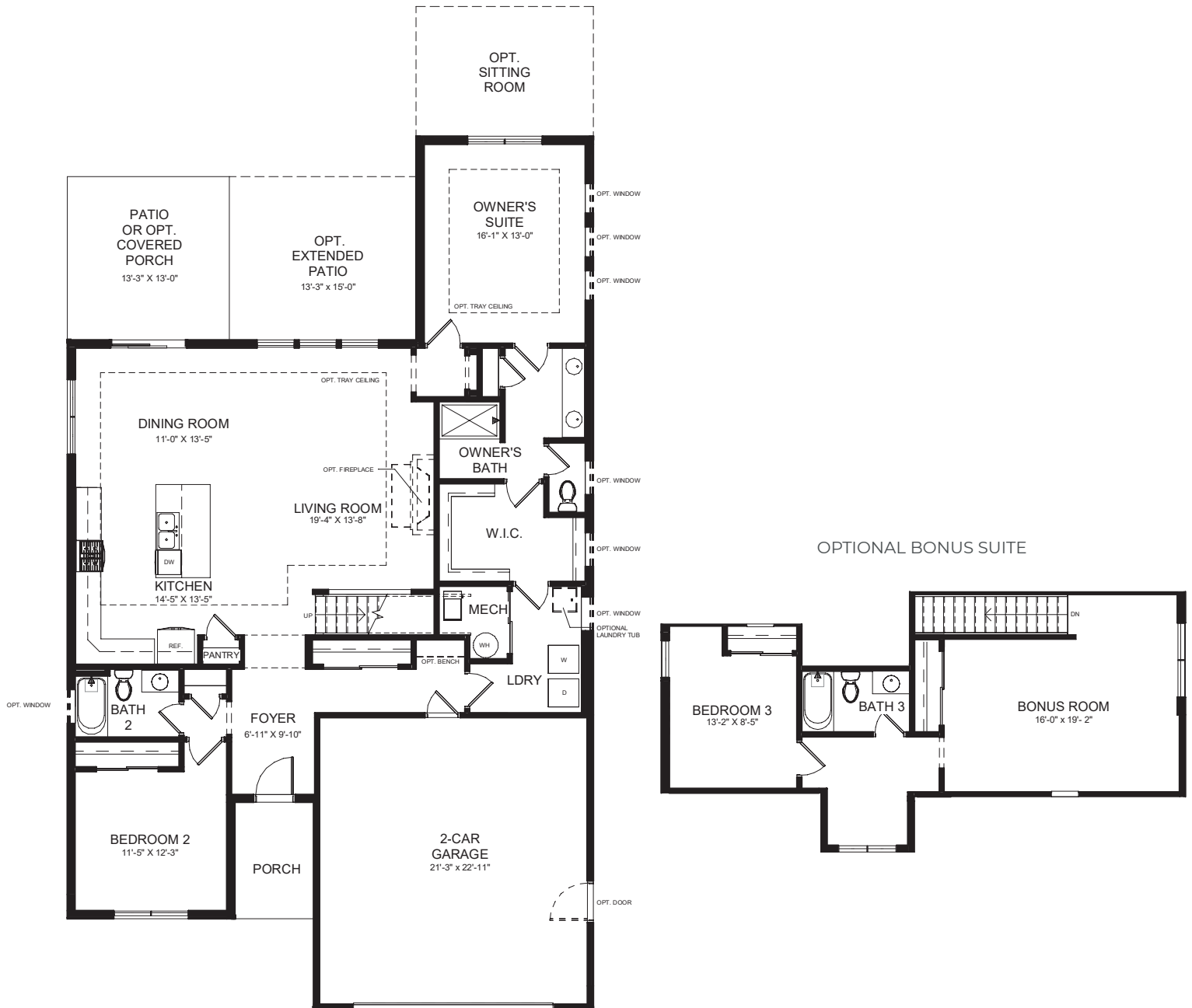
(724) 223-1844
WWW.SCARMAZZIHOMES.COM

This floor plan brochure is for illustration purposes only. Features and specifications are subject to change without notice. The designs shown here, as well as the entire Development System, are the property of Epcon Communities Franchising, Inc. and are subject to copyright, patent, and trade secret protection. Use of any part of these designs or the Development System is prohibited without the written consent of Epcon Communities Franchising, Inc.

**SCARMAZZI
HOMES**
Luxury Patio Homes

THE SALERNO

SINGLE LEVEL FLOOR PLAN W/ BONUS SUITE



*Additional options may be available.

(724) 223-1844
WWW.SCARMAZZIHOMES.COM

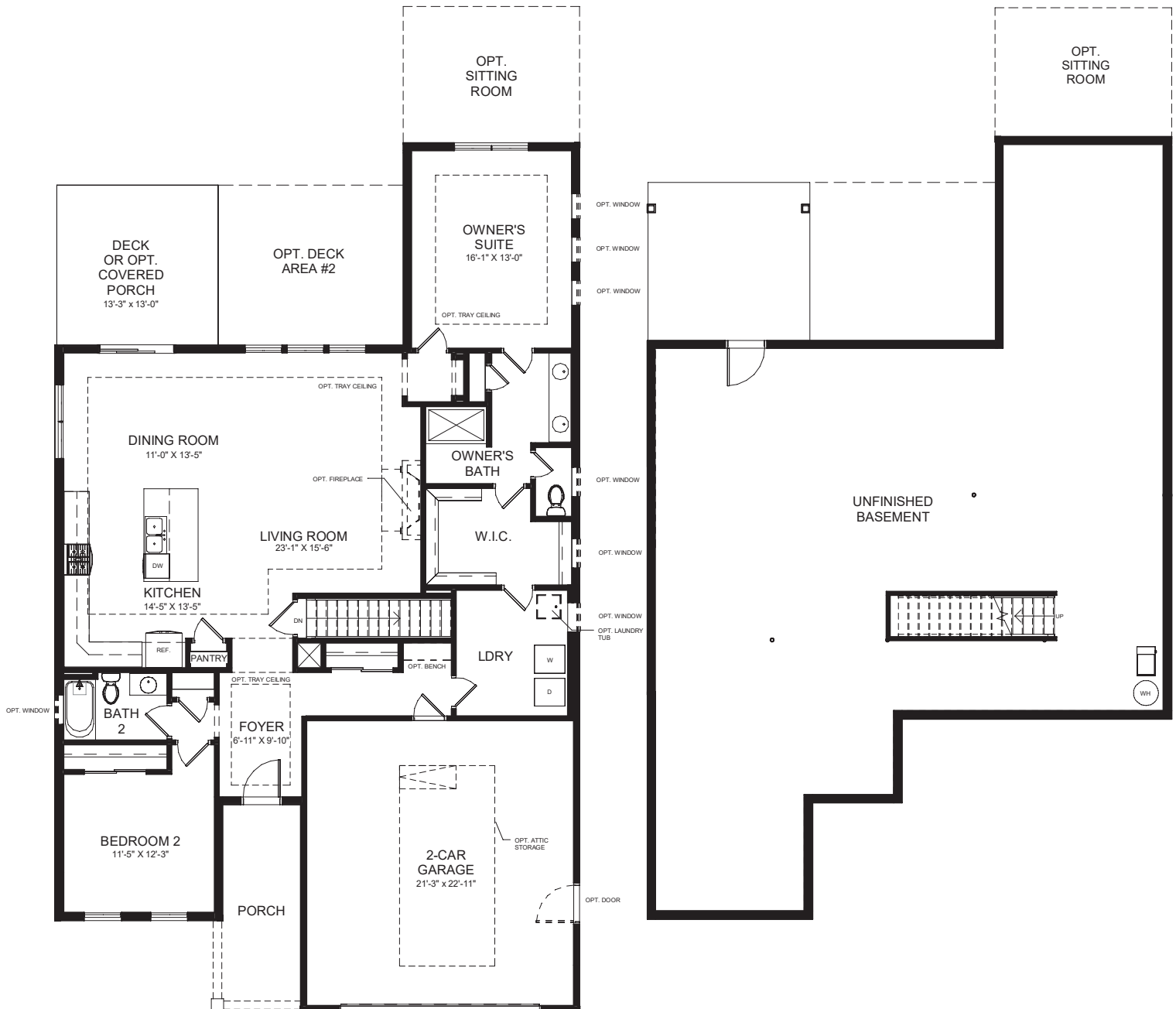
This floor plan brochure is for illustration purposes only. Features and specifications are subject to change without notice. The designs shown here, as well as the entire Development System, are the property of Epcon Communities Franchising, Inc. and are subject to copyright, patent, and trade secret protection. Use of any part of these designs or the Development System is prohibited without the written consent of Epcon Communities Franchising, Inc.

**SCARMAZZI
HOMES**
Luxury Patio Homes

THE SALERNO

FIRST FLOOR PLAN
W/UNFINISHED BASEMENT

OPTIONAL UNFINISHED BASEMENT



*Additional options may be available.

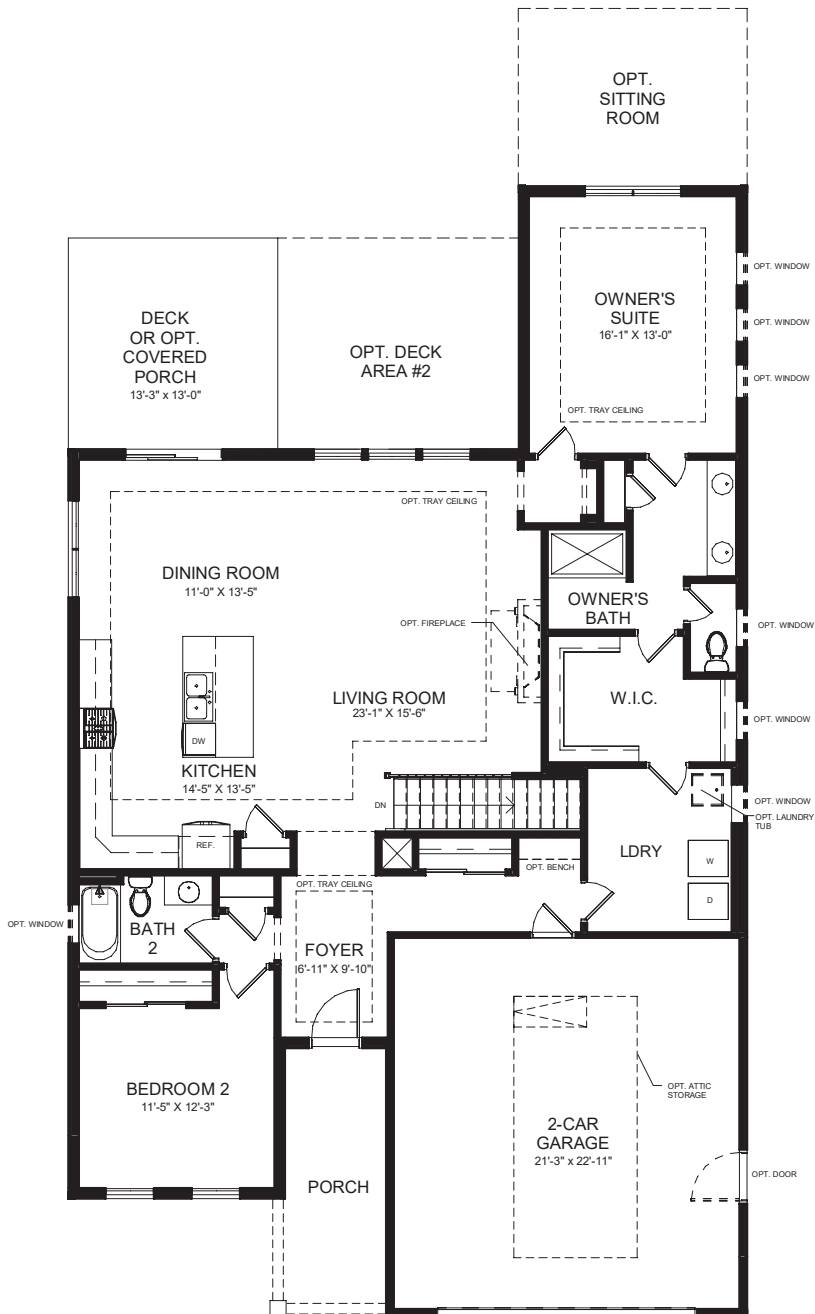
(724) 223-1844
WWW.SCARMAZZIHOMES.COM

This floor plan brochure is for illustration purposes only. Features and specifications are subject to change without notice. The designs shown here, as well as the entire Development System, are the property of Epcon Communities Franchising, Inc. and are subject to copyright, patent, and trade secret protection. Use of any part of these designs or the Development System is prohibited without the written consent of Epcon Communities Franchising, Inc.

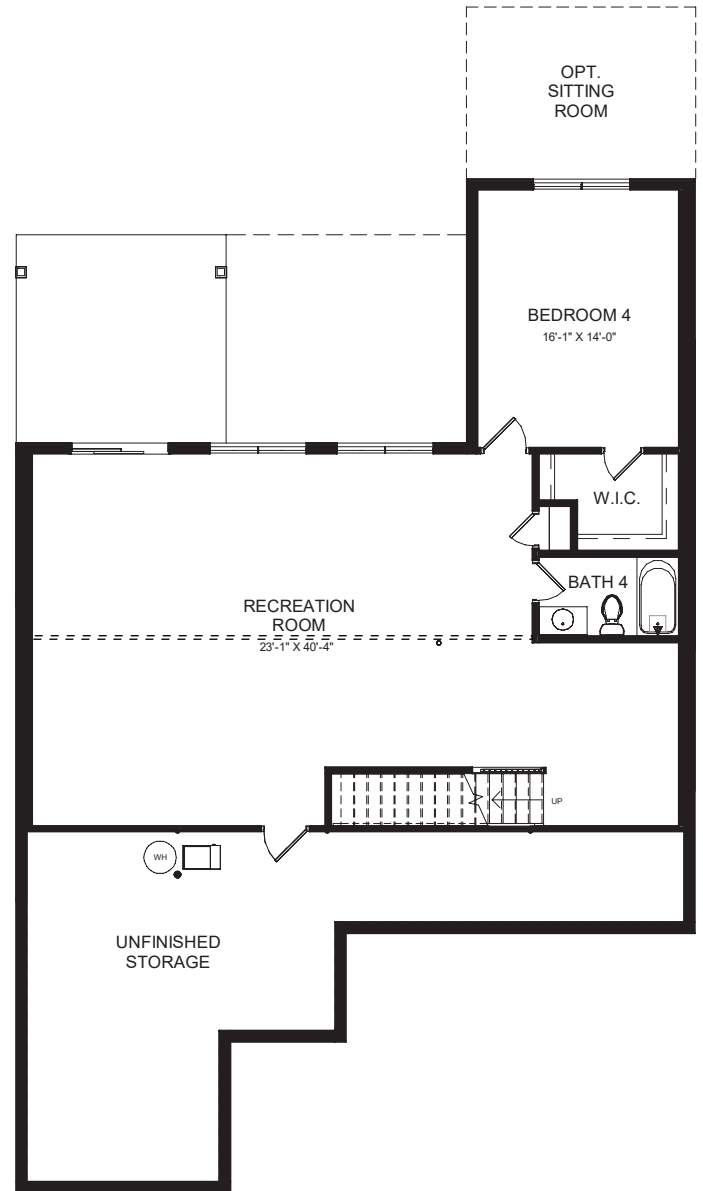
**SCARMAZZI
HOMES**
Luxury Patio Homes

THE SALERNO

FIRST FLOOR PLAN
W/FINISHED BASEMENT



OPTIONAL FINISHED BASEMENT



*Additional options may be available.

(724) 223-1844
WWW.SCARMAZZIHOMES.COM

This floor plan brochure is for illustration purposes only. Features and specifications are subject to change without notice. The designs shown here, as well as the entire Development System, are the property of Epcon Communities Franchising, Inc. and are subject to copyright, patent, and trade secret protection. Use of any part of these designs or the Development System is prohibited without the written consent of Epcon Communities Franchising, Inc.

**SCARMAZZI
HOMES**
Luxury Patio Homes