

3 BEDROOMS | 2+ BATHROOMS | 2 CAR GARAGE



# THE OXFORD

*Lifestyle Townhome*

Approximate Sq. Footage:

**Base Plan**

1st Floor: 1199 Sq. Ft.

2nd Floor: 859-867 Sq. Ft.

**Total: 2,058-2,066 Sq. Ft.**

This brochure is for illustrative purposes only and not part of a legal contract. The right is reserved to make changes, without notice or obligation. Features and specifications may vary depending on the options and elevations selected. Please consult your New Home Consultant for complete information.

We are pledged to the letter and spirit of U.S. policy for the achievement of equal housing opportunity throughout the nation. We encourage and support an affirmative advertising and marketing program in which there are no barriers to obtaining housing because of race, color religion, sex, handicap, familial status or national origin.



**SCARMAZZI  
HOMES**

# THE OXFORD

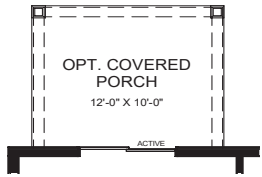
Lifestyle Townhome

FIRST FLOOR PLAN

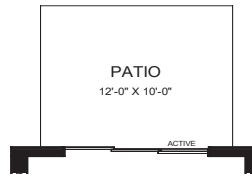
SECOND FLOOR PLAN

OPTIONS

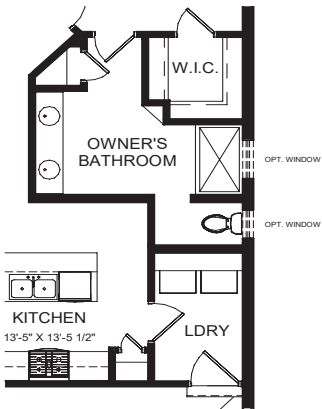
OPT. COVERED PORCH



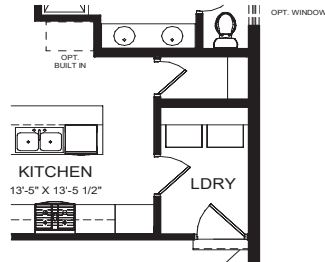
OPT. TRIPLE SLIDER



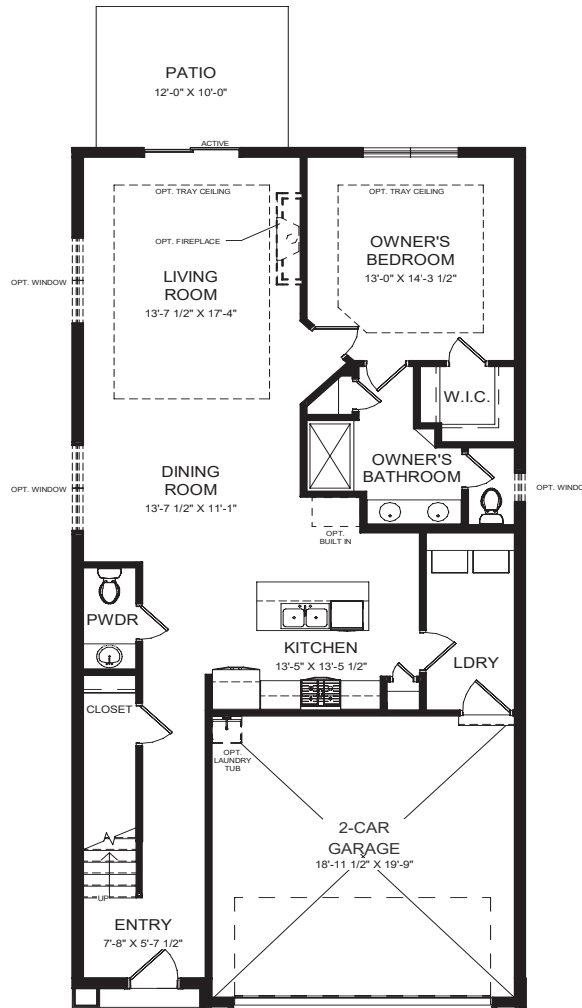
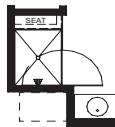
OPT. SIGNATURE BATH



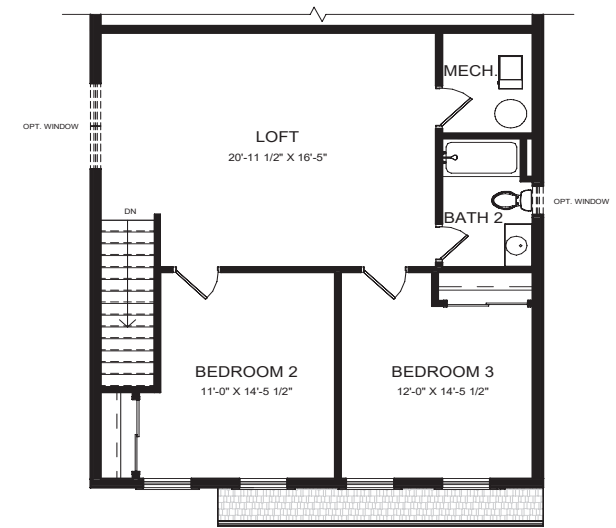
OPT. STEP IN PANTRY



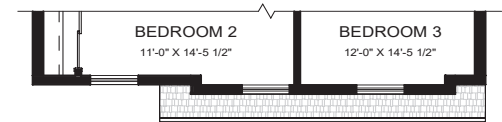
OPT. DELUXE SHOWER



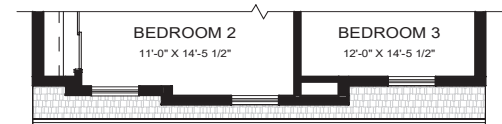
ALL ELEVATIONS



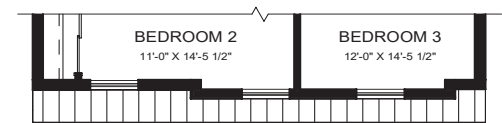
ELEVATIONS 1 & 3



ELEVATIONS 2 & 4



ELEVATION 5



ELEVATION 6

\*Additional options may be available.

(724) 223-1844

WWW.SCARMAZZIHOMES.COM

This floor plan brochure is for illustration purposes only. Features and specifications are subject to change without notice. The designs shown here, as well as the entire Development System, are the property of Epcon Communities Franchising, Inc. and are subject to copyright, patent, and trade secret protection. Use of any part of these designs or the Development System is prohibited without the written consent of Epcon Communities Franchising, Inc.



SCARMAZZI  
HOMES